

American Shared Hospital Services

Making the Best Healthcare Technology Accessible



Safe Harbor Statement

This presentation may be deemed to contain certain forward-looking statements with respect to the financial condition, results of operations and future plans of American Shared Hospital Services (including statements regarding the expected continued growth in volume of the MEVION S250 system, the expansion of the Company's proton therapy business, and the timing of treatments by new Gamma Knife systems) which involve risks and uncertainties including, but not limited to, the risks of variability of financial results between quarters, the risks of the Gamma Knife and radiation therapy businesses, the risks of changes to CMS reimbursement rates or reimbursement methodology, and the risks of the timing, financing, and operations of the Company's proton therapy business. Further information on potential factors that could affect the financial condition, results of operations and future plans of American Shared Hospital Services is included in the filings of the Company with the Securities and Exchange Commission, including the Company's Annual Reports on Form 10-K, Quarterly Reports on Form 10-Q and the definitive Proxy Statement for the Annual Meeting of Shareholders.

Overview

American Shared Hospital Services has an over 30-year track record of leasing state-of-the-art medical equipment to hospitals and medical centers in the United States and abroad.

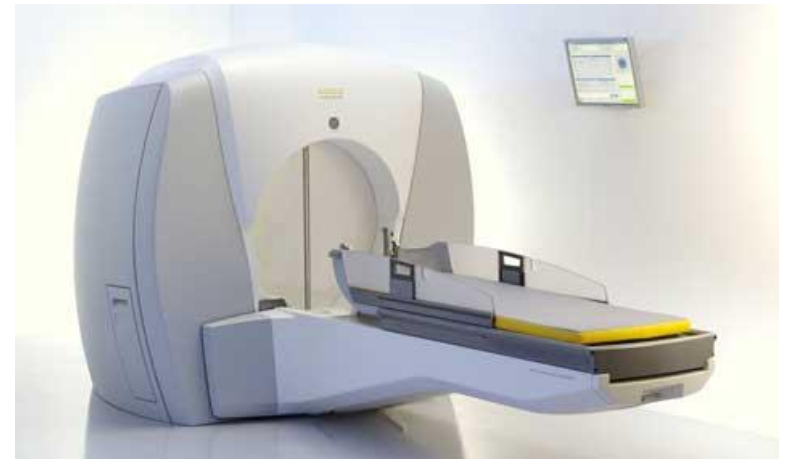
We are the worldwide leader in Gamma Knife unit ownership through our 81% owned subsidiary, GK Financing, LLC (GKF). Our Gamma Knife financing model has been expanded to incorporate the financing of other technology solutions including Intensity Modulated Radiation Therapy (IMRT) and Proton Beam Radiation Therapy (PBRT).

MARKET DATA

Ticker: NYSE American	AMS
Price (12/6/2019)	\$2.55
52 Week Range	\$2.19 - \$3.30
Market Cap	\$14.8M
Average Daily Trading (30 day)	~15,000
FD Common Shares Outstanding	5.9M
Float	3.7M
Tangible Book Value per share (9/30/2019)	\$5.40
Cash and Equivalents per share (9/30/2019)	\$0.17

Investment Highlights

- + Pioneer in single room Proton Beam Radiation Therapy (PBRT) services
- + World leading supplier of Gamma Knife services
- + Long-standing alliances with premier cancer centers
- + Large market opportunities
 - Proton Therapy has low market penetration
 - Advanced radiation therapy devices
- + Proven business model
 - Operating profitability for 20 of last 21 years
- + Respected management team with deep experience



Respected Management Team With Deep Experience

MANAGEMENT TEAM	Years of Healthcare Experience
Ernest A. Bates, M.D. Founder, Chairman and CEO	30+
Craig K. Tagawa COO and CFO	30+
Ernest R. Bates V.P., Sales and Business Development	15+
Alexis Wallace Controller	10+

Highly Regarded Customers*

- + UC San Francisco Medical Center
- + Tufts Medical Center: Boston, MA
- + Methodist Hospital: San Antonio, TX
- + University of Arkansas for Medical Sciences:
Little Rock, AR
- + Johns Hopkins Medical Center: Baltimore, MD
- + Merit Health Central: Jackson, MS
- + Yale-New Haven Hospital: New Haven, CT
- + OSF St. Francis Medical Center: Peoria, IL
- + Kettering Medical Center: Kettering, OH
- + PeaceHealth: Eugene: OR
- + Lovelace Medical Center: Albuquerque, NM
- + USC University Hospital: Los Angeles, CA
- + Northern Westchester Hospital: Mt. Kisco, NY

* Representative list

Proven Business Model

- + Structured as an **alternative leasing company**
- + **Offer Innovative financing** features not available from traditional finance companies
 - + **Long Term Agreements**
 - Typically 10 years
 - + **Revenue Sharing or Fee Per Use**
 - No minimum volume guarantees

Partner Responsibilities

ASHS' RESPONSIBILITIES

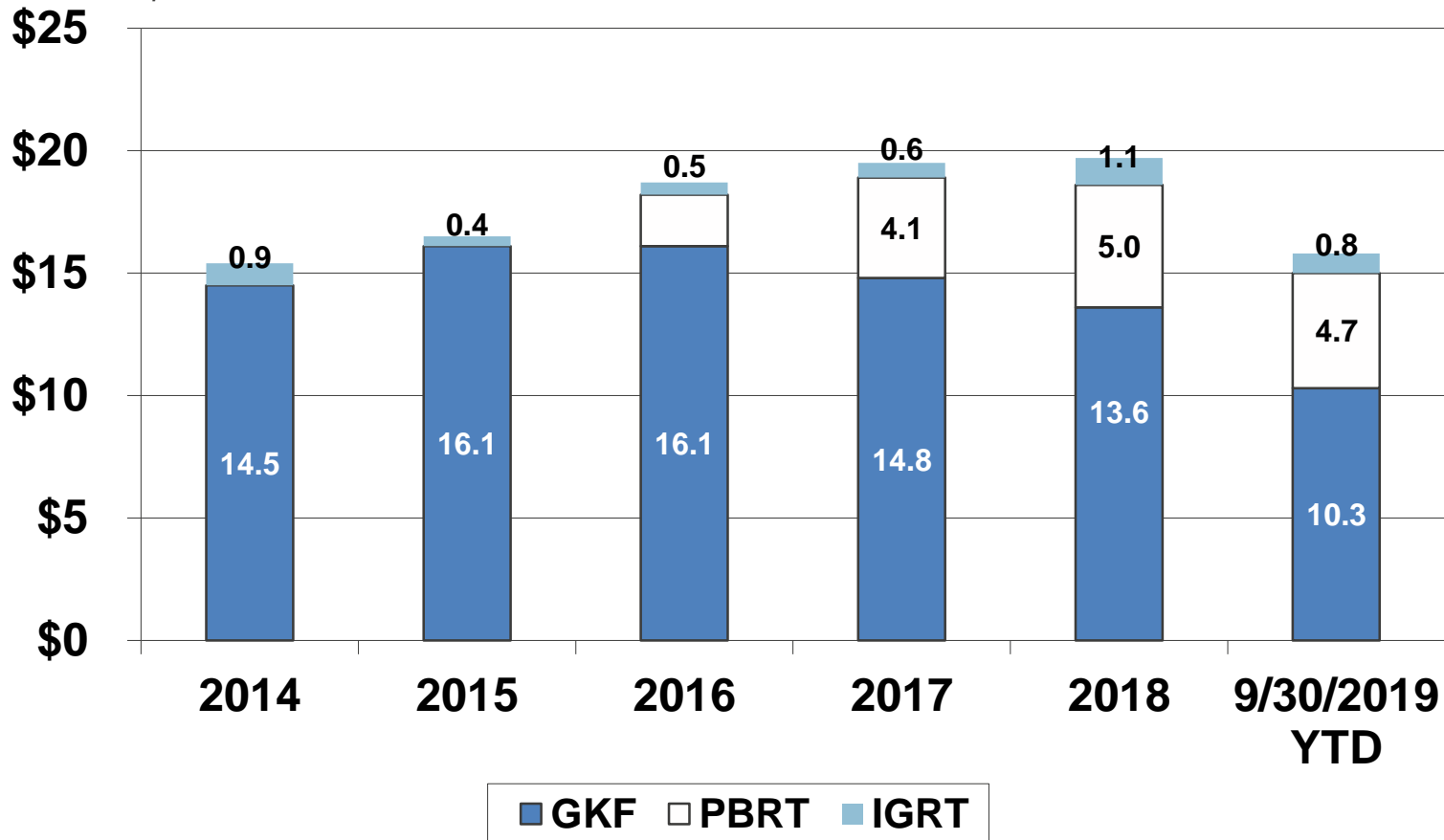
- Acquire equipment
- Equipment-related operating expenses
- Jointly fund marketing

HOSPITAL RESPONSIBILITIES

- Site costs
- Non-equipment-related operating expenses
- Jointly fund marketing

Growing Contribution from Proton Therapy

Revenue Summary 2013 – 2019
\$ / Millions



Proton Beam Radiation Therapy

- + **Commercial & Profitable:**
Single room proton beam radiation therapy centers
 - + Significantly reduced average cost per treatment room to \$30 - \$40M
 - + ASHS provider is Mevion Medical Systems

- + **Partner:** The Marjorie and Leonard Williams Center for Proton Therapy at UF Health Cancer Center - Orlando Health

- + **NOT a NEW** Technology

- + Clinically **Advantageous**
 - + **Protons deposited dose at tumor**, more effective than x-rays passing through a tumor
 - + **Minimizes damage** to surrounding tissue

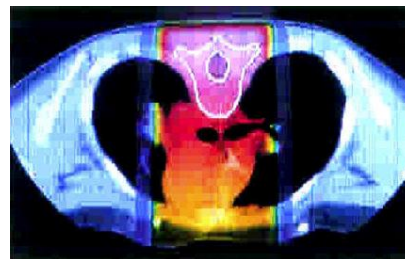
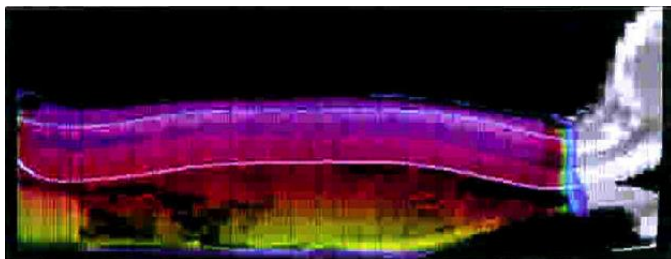
- + **Increasing awareness** of therapeutic benefits across indications

Prostate	Breast
Head and Neck	Lymphomas
Lung	Central Nervous System
Liver	Pediatric
GI	

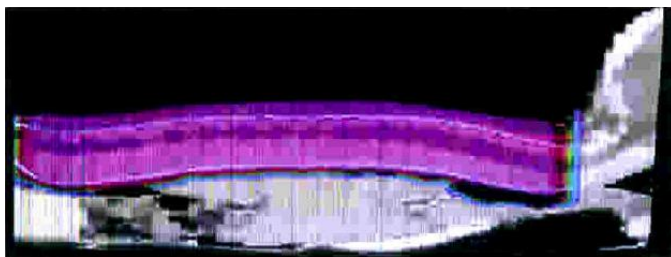
Photon vs. Proton

Pediatric Medulloblastoma

Photon Beam Delivery



Proton Beam Delivery



% Dose
Recommended



**PBRT Delivers Improved Dose
Distribution**

Large U.S. Market Opportunity for Additional PBRT Centers

- + Currently **only 30 PBRT** centers* in operation
 - Capacity of **90 rooms**
- + **Only 4 PBRT centers** under construction or in development*
- + **Only 7% - 14%** of required capacity is currently available for treatment
 - ASHS projected capacity required to meet demand
 - **635 – 1,270 rooms****
- + Each additional treatment room offers potential for substantial incremental Revenue and EBITDA

* Source: The National Association for Proton Therapy, 2019

** Assumes 15% - 30% of 1.1 million patients eligible for radiation therapy annually receive PBRT, see slide 15

Low Market Penetration of PBRT

PBRT CAPTURE RATE	15% ²	30% ³
Number of radiation therapy patients annually in the U.S. ¹	1,057,470	1,057,470
Percent of radiation therapy patients eligible for PBRT	15%	30%
Number of potential PBRT patients in the U.S.	158,600	317,241
Potential PBRT room market*	635	1,270
Current PBRT rooms in operation⁴	90	

*Assumed 250 patients treated annually per PBRT room

(1) The American Cancer Society indicates that 1,762,450 people in the United States will be diagnosed with cancer in 2019. Approximately 60% of these people will receive radiation treatment.

(2) "Number of Patients Potentially Eligible for Proton Therapy," Acta Oncologica 2005; 44; 836-849; Bengt Glimelius, Anders Ask, Et. Al.

(3) "Evaluation of Potential Proton Therapy Utilization in a Market Based Environment," Tomas Dvorak, M.D. and David E. Wazer, M.D.

(4) The National Association for Proton Therapy, 2019

Exploring Expansion Opportunities

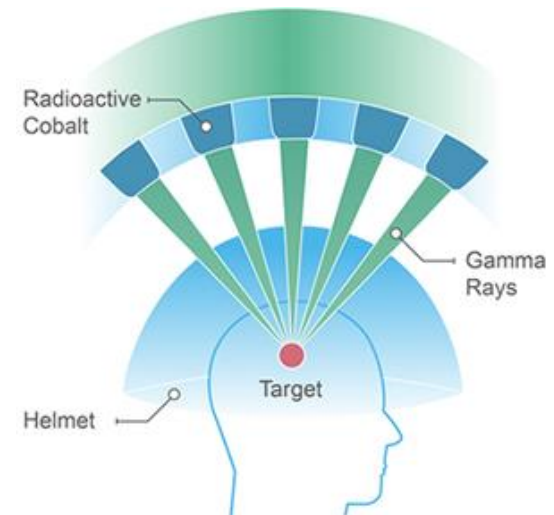
ASHS

- + Developing single and two room proton beam radiation therapy centers with major hospitals
- + MR Guided Linac
- + Community Hospitals
- + International
 - + Latin America initially



Gamma Knife Radiosurgery Equipment

- + World's leading supplier
 - U.S. market share ~13%
- + Gold standard equipment for cranial radiosurgery
 - Non-invasive alternative to surgery for malignant and benign brain tumors, vascular malformations and trigeminal neuralgia (facial pain)
- + Typically improves patient quality of life both during and after treatment
 - Usually performed as an outpatient procedure
 - Virtually pain-free
 - Typically no anesthesia
 - Minimal side effects
 - Patients typically return to pre-surgery activities within several days
- + Typical project cost - \$3 - 4 million



Current Business Status

- + Identifying healthcare technology investment opportunities with **long term growth potential**
- + Negotiations continuing for **2 additional PBRT installations**
- + **Gamma Knife**
 - Completed first Icon upgrade
 - Anticipate additional Icon upgrades in 2020
- + Identifying **additional international opportunities**



American Shared Hospital Services

ASHS

Making the Best Healthcare Technology Accessible



Thank You!

For Further Information Contact:

Craig Tagawa
COO and CFO
ctagawa@ashs.com
(415) 788-5300

www.ashs.com